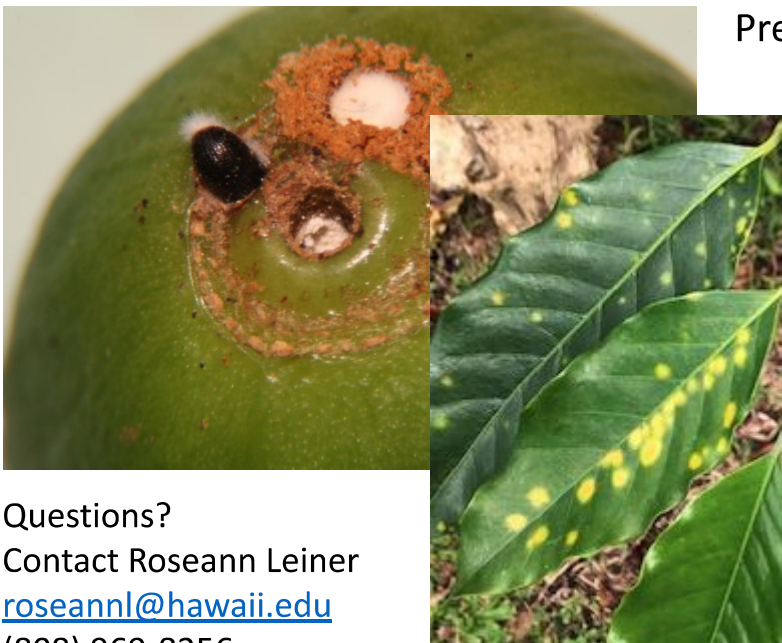


COFFEE BERRY BORER and COFFEE LEAF RUST CONFERENCE

April 16 and 17, 2021
Friday and Saturday
9:00 AM – 12:30 PM
on Zoom

The USDA-Agricultural Research Service and University of Hawaii-CTAHR invite you to participate in the Coffee Berry Borer (CBB) and Coffee Leaf Rust (CLR) Conference. This is an informational event where farmers, researchers, Cooperative Extension, and other agricultural professionals can share their knowledge on managing these coffee pest and disease issues. Please join us; This event is open to all who are interested.



Presentation topics will include:

- CBB and CLR Management
- CLR Monitoring
- Biological Control
- Cultural Practices
- Nematode Management
- New Technology
- BEST BEANS App Introduction

EVENT REGISTRATION

<https://cbb-clr2021.eventbrite.com>

Questions?

Contact Roseann Leiner
roseannl@hawaii.edu
(808) 969-8256

Hosted by the Coffee Berry Borer
Area-Wide Program



COOPERATIVE EXTENSION
UNIVERSITY OF HAWAII AT MĀNOA
COLLEGE OF TROPICAL AGRICULTURE AND HUMAN RESOURCES



For information or to request an auxiliary aid or service (e.g., sign language interpreter or materials in alternate format), contact Roseann (roseannl@hawaii.edu) at 808-969-8256 at least seven days before the activity/event.